



November, 1997

Reference: STI AF-SBC-97-004

Special Technical Instruction - Possible cracking to engine mounting plate to limited number of later production aircraft.

Problem: Two separate incidents have been reported to this factory of high hour training aircraft found to have fractures appear in the aluminium engine mounting plate. Our history file would indicate this problem is limited to later build aircraft using the red polyurethane mount rubbers.

Fracture initiates from contact point of metric 10 bolt washer and proceeds forward and aft on the centre section of the plate.

Procedure: Inspect existing plate for evidence of fracturing at or around centre four metric bolt washer contact area, particularly left front, right rear.

Inspection can be carried out in-situ by firstly cleaning the plate area with a solvent or detergent then eye ball inspection from all sides to determine if any fractures are present. If no fracturing is found please carry out regular inspection during daily inspection, pre-flight inspection and at least every 20 hour of engine operation.

Rectification:

If existing plate is found to have a fracture please contact the undersigned and a replacement plate will be supplied at nominal cost. If it is more convenient, the aircraft can be returned to this factory and we will carry out the repair.

The plate is not difficult to change and requires only the exhaust mount rubber strip, four metric 10 engine to plate bolts and the four plate to frame bolts to be removed. The engine can then be lifted sufficiently to slide the old plate out and the new one in.

Ensure plate is installed with engine offset to the left of airframe centre when viewed from the rear, looking toward the propeller.

The four metric 10 bolts are secured with Loctite 222 and torqued to 40 nm (30 Lbf ft) then lockwired. The four 5/16" bolts and nuts securing the poly mount to the frame are torqued to 14 nm (10 lbf ft).

The four 3/16" bolts securing the exhaust rubber strip are lightly tensioned.

R & D Program:

We will be testing softer compound isolating rubbers with modified plate and will advise the outcome with the view of extending the service life of this component.

AUSTFLIGHT ULA PTY LTD

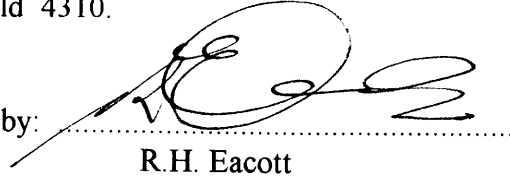
Material Included:

Exchange Engine Mount Plate.
Two metres of S. S. Safety lockwire.
Copy of Drawing showing general mount arrangement.

Disposition of Effected Part:

Please return plate via Australia Post to Austflight ULA Pty Ltd., Reply Paid 11,
Boonah Qld 4310.

Authorised by:



R.H. Eacott
Workshop Manager

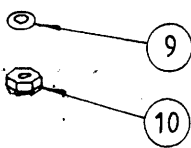
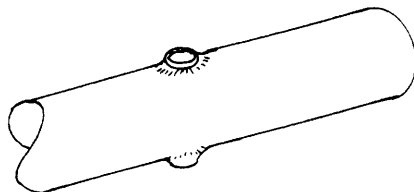
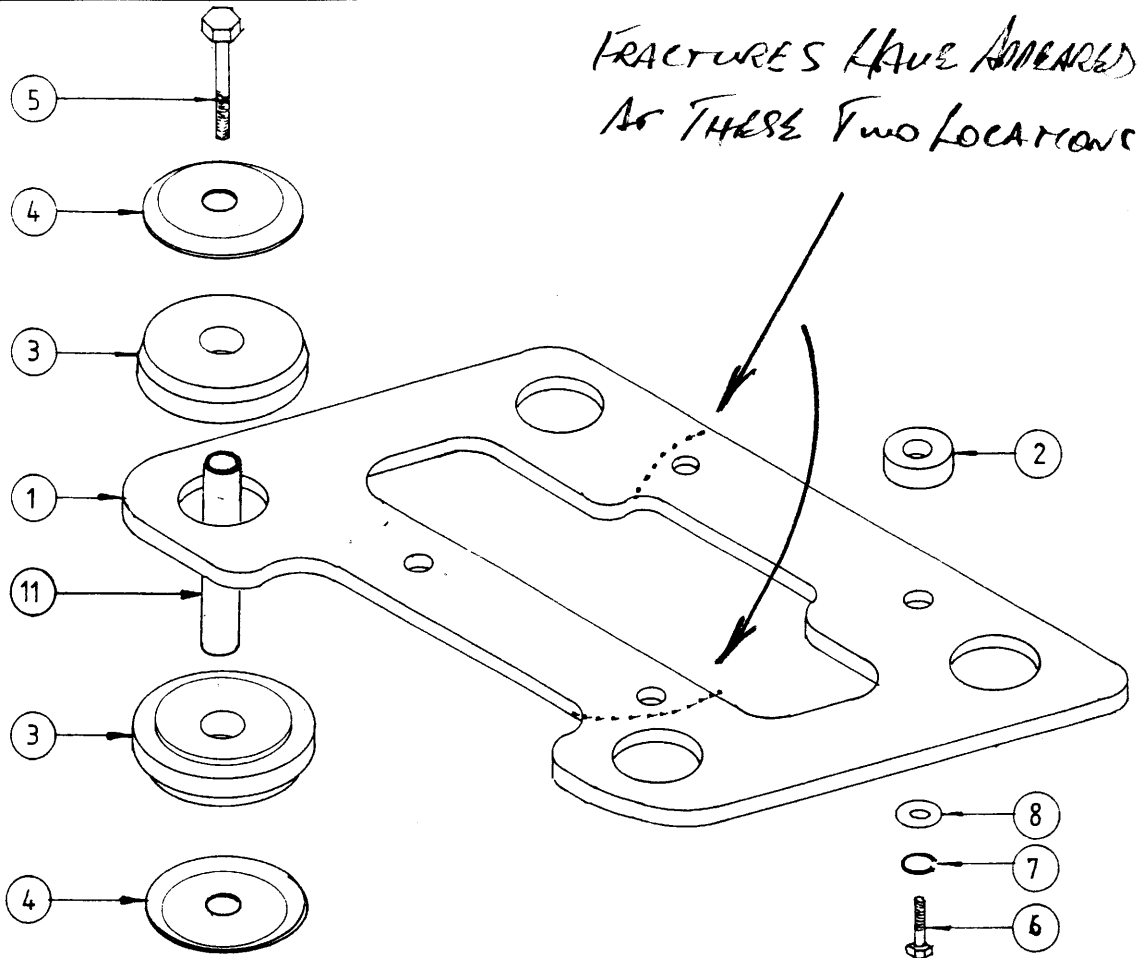
Distribution:

All Drifter SB aircraft owners from airframe serial number DR96-1028SB to
DR97-1044SB

cc: Bob White C.A.S.A. Brisbane
Quentin Campbell - A.U.F. Canberra

AUSTFLIGHT U.L.A. PTY. LTD.
 REPLY PAID 11
 BOONAH, Q. 4310

17.11.97
 STI-AF-SBC-97-004



1	ISSUE	MATL/
	CHANGES	AUS
		THIS C OR AIF OF AN
JM	DRN	TITLE
RJP	CHKD	ENGI
20.12.95	DATE	

THIS DRAWING IS THE PROPERTY OF AUSTFLIGHT AVIATION AND MUST NOT BE COPIED OR REPRODUCED WITHOUT WRITTEN PERMISSION

ALL DIMENSIONS mm
 TOLERANCE U.O.N.
 N/A